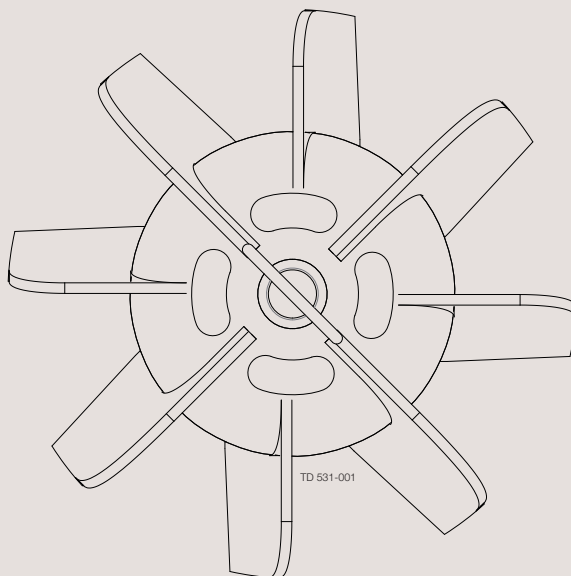




Spare Parts

Alfa Laval Magnetic Mixer MM338



Not manufactured anymore

ESE02448-EN12 2020-06

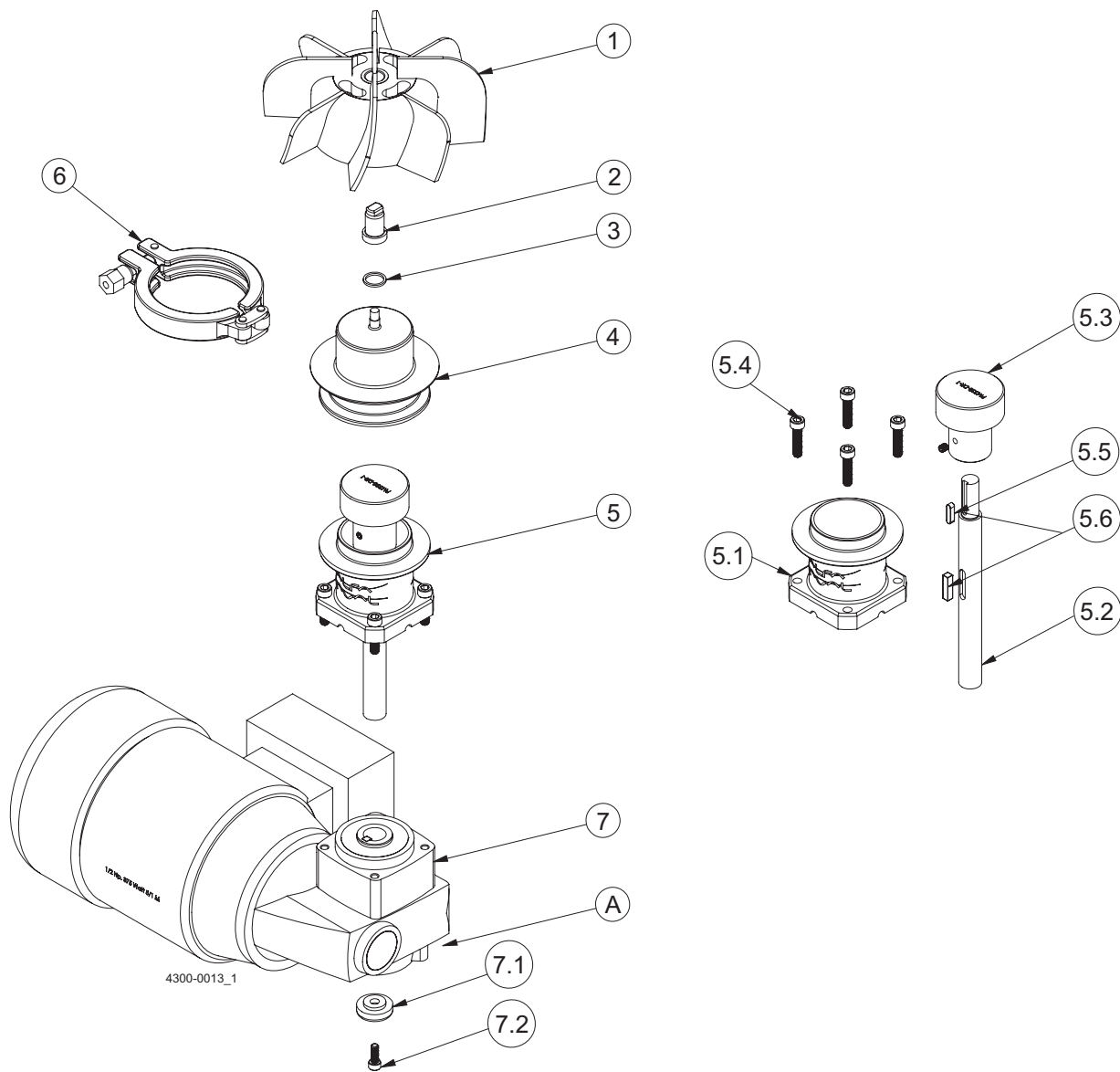
Original manual

The information herein is correct at the time of issue but may be subject to change without prior notice

1. Component Drawings and Lists of Parts, Magnetic Mixer MM338	4
2. Upgrade possibilities of MM338	10
2.1. Drive Unit Upgrade (DU KIT and Gear Motor)	11

Not manufactured anymore

-2 and -3 versions



Pos. A: No fixing element cover = version 2 or 3

Component Drawings and Lists of Parts, Magnetic Mixer MM338

Parts list, Magnetic Mixer MM338

-2 and -3 versions

Pos	Qty	Denomination	Item no.	Size
1	□	- IMP, PM338-4"-HSA IMPELLER, new (20 Ra max)	9634086378	4
	□	- IMP, PM338-6"-HSA IMPELLER, new (20 Ra max)	9634086026	6
	□	- IMP, PM338-4"-HSA-EP, new (20 Ra max plus Electro polish) ...	9634086513	4
	□	- IMP, PM338-6"-HSA-EP, new (20 Ra max plus Electro polish) ...	9634086514	6
1*	□	- MM338-IMPFB-REPAIR, R&R of female bearing	9634086486	All
	□	- MM338-IMPFB-REPAIR-EP, R&R of female bearing +EP	9634089579	All
2		- Male Bearing, YTZP (Zirconia Ceramic)	9634086107	
3		- Male Bearing Gasket, ISOLAST® PerFluoro elastomer	9634086109	
4		- Weld Plate, 316L Stainless Steel	9634086405	Accy**
5	□	- Drive unit kit, see table below		
5.1	□	- DU flange, see table below		
5.2	□	- Axle, see table below		
5.3		- Drive Rotor	9634086085	
5.4		- SHCS, Stainless Steel		M6x25
5.5		- Key	N/A	M4x16
5.6		- Key, supplied with gear motor	N/A	M5x20
6		- Clamp	9634086467	2.5"
7	□	- Gear Motor code A, 3 X 230/460 VAC 60Hz	9634086551	0.5Hp
	□	- Gear Motor code B, 3 X 332/575 VAC 60Hz	9634086552	0.5Hp
	□	- Gear Motor code C, 3 X 205/355 VAC 50Hz (OBS)	9634086526	0.5Hp
	□	- Gear Motor code D, 3 X 230/400 VAC 50Hz	9634086553	0.5Hp
7.1		- Fixing Element, supplied with gear motor	N/A	
7.2		- SHCS, supplied with gear motor	N/A	M5

Note*: Pos. 1 REPAIR: The impeller must be returned to Alfa Laval for repair. Please contact Customer Support.

Note:** Pos. 4: Accessory - not Spare part.

Version	Pos. 5 Drive unit kit	Pos. 5.1 DU flange	Pos. 5.2 Axle
-2, Stainless steel	9634086468	9634086455	9634086081
-3, extended version	9634086557	9634086560	9634086559

Conversion Kit to be used when upgrading the -2 or -3 Gearmotor to the -6 Drive Unit:

9614452001 MM338-6-DU CONVERSION KIT

Note: Drive rotor from existing Drive Unit to be re-used.

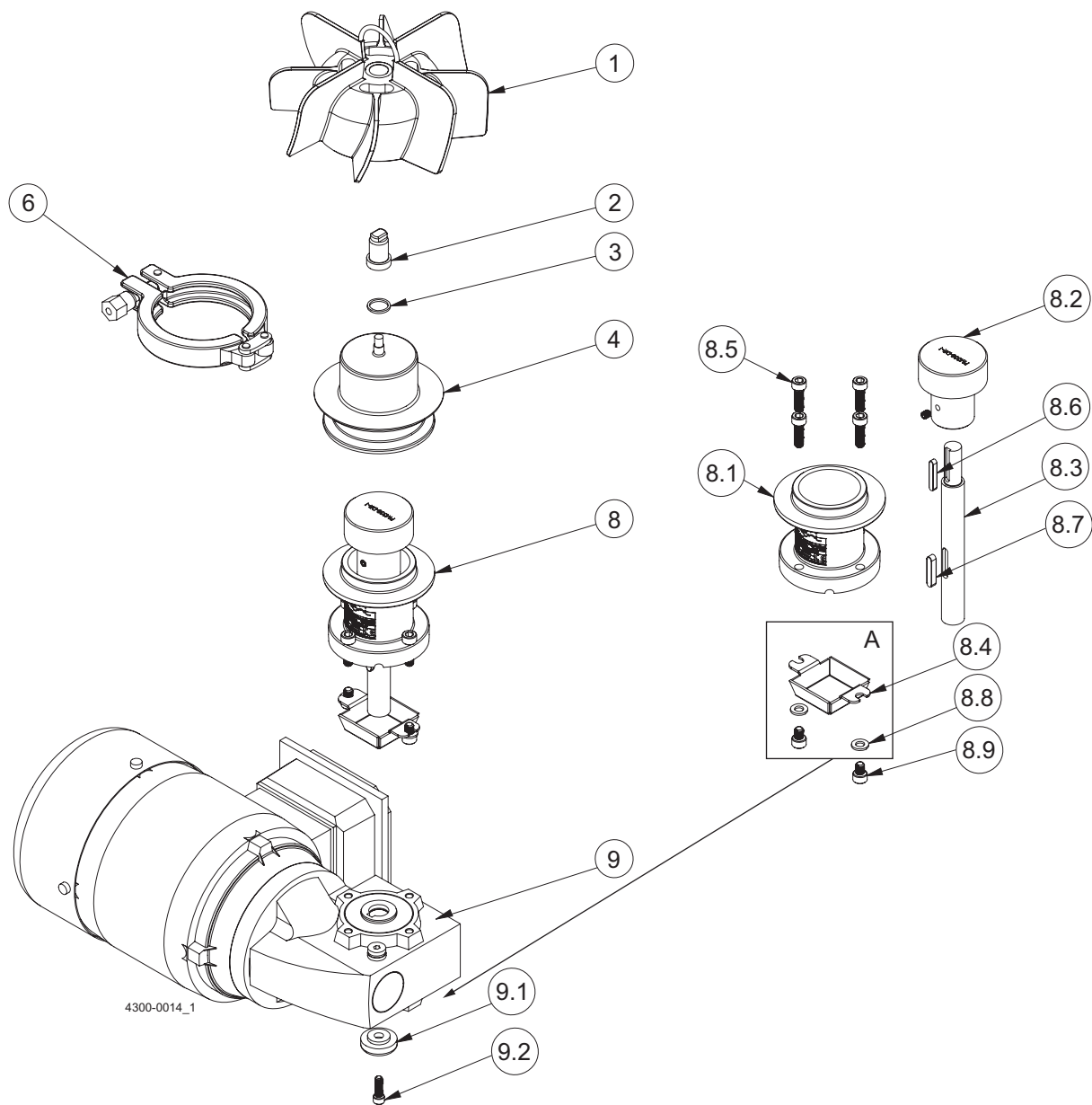
Conversion Kit to be used when upgrading the -2 or -3 Gear motor to the -7 Drive Unit:

9636000497 MM338-7-DU CONVERSION KIT

Note: Drive rotor from existing Drive Unit to be re-used.

Not manufactured anymore

-6 and -7 versions



Component Drawings and Lists of Parts, Magnetic Mixer MM338

Parts list, Magnetic Mixer MM338

-6 and -7 versions

Pos	Qty	Denomination	Item no.	Size
1	<input type="checkbox"/>	- IMP, PM338-4"-HSA IMPELLER, new (20 Ra max)	9634086378	4
	<input type="checkbox"/>	- IMP, PM338-6"-HSA IMPELLER, new (20 Ra max)	9634086026	6
	<input type="checkbox"/>	- IMP, PM338-4"-HSA-EP, new (20 Ra max plus Electro polish) ...	9634086513	4
	<input type="checkbox"/>	- IMP, PM338-6"-HSA-EP, new (20 Ra max plus Electro polish) ...	9634086514	6
1*	<input type="checkbox"/>	- MM338-IMPFB-REPAIR, R&R of female bearing	9634086486	All
	<input type="checkbox"/>	- MM338-IMPFB-REPAIR-EP, R&R of female bearing +EP	9634089579	All
2		- Male Bearing, YTZP (Zirconia Ceramic)	9634086107	
3		- Male Bearing Gasket, ISOLAST® PerFluoro elastomer	9634086109	
4		- Weld Plate, 316L Stainless Steel	9634086405	Accy**
6		- Clamp	9634086467	2.5"
8	<input type="checkbox"/>	- Drive unit kit, see table below		
8.1	<input type="checkbox"/>	- DU flange, see table below		
8.2		- Drive Rotor	9634086085	
8.3	<input type="checkbox"/>	- Axle, see table below		
8.4	<input type="checkbox"/>	- Fixing element guard, Stainless Steel	9634093420	
8.5		- SHCS, Stainless Steel	9634093426	M6x20
8.6		- Key, supplied with Axle	N/A	M4x25
8.7		- Key, supplied with Axle	N/A	3/16x1
8.8		- Washer, Stainless Steel		M6
8.9		- SHCS, Stainless Steel		M6x8
9	<input type="checkbox"/>	- Gear Motor code A, 3 X 230/460 VAC 60Hz	9634093414	0.5Hp
	<input type="checkbox"/>	- Gear Motor code B, 3 X 332/575 VAC 60Hz	9634093416	0.5Hp
	<input type="checkbox"/>	- Gear Motor code D, 3 X 230/400 VAC 50Hz	9634093418	0.5Hp
9.1		- Fixing element, supplied with gear motor	N/A	
9.2		- SHCS, supplied with gear motor	N/A	

Note*: Pos. 1 REPAIR: The impeller must be returned to Alfa Laval for repair. Please contact Customer Support.

Note:** Pos. 4: Accessory - not Spare part.

Version	Pos. 8 Drive unit kit	Pos. 8.1 DU flange	Pos. 8.3 Axle
-6, Stainless steel	9634093412	9634093288	9634093286
-7, extended version	9334093520	9634093287	9634093285

Identification of Magnetic Mixer version

All versions

The version of the Magnetic Mixer can be identified from the article number of the complete mixer. We refer to order acknowledgement or delivery note on which the article number is stated.

Version 6 and 7

In addition to the article number, the version can also be identified from the description code on the plaque (example version 6):



Article number overview

Version 2 & 3

Version 2 Item numbers, complete mixer	Version 3 Item numbers, complete mixer
9614063809	9614063833
9614063810	9614063835
9614063813	(Extended flange)
9614063814	
9614063817	
9614063818	
9614063821	
9614063822	
9614063825	
9614063826	
9614063829	
9614063830	

Note:
- Serial # is stated on the impeller

Version 6 & 7

Version 6 Item numbers	Version 7 Item numbers
9614303401	9614307701
9614303402	(Extended flange)
9614303403	
9614303404	
9614303405	
9614303406	
9614303407	
9614303408	
9614303409	
9614303410	
9614303411	
9614303412	

Note:

- Serial # is stated on the plaque

2 Upgrade possibilities of MM338

MM338 Old style weldplate with M6 thread	Upgrade Possibilities	Also Needed	Note about Driving Conditions	Method
New Impeller	WP50 Impeller	8010001710 SERVICE KIT MALE ULTRAPURE LeviMag® SIZE WP50 M6	The recommended maximum speeds in a fully baffled tank - mixing products with water like viscosity - are: 4" impeller: 350 RPM 6" impeller: 250 RPM	Buy Impeller Kit 8010002742 IMPELLER KIT ø100 or 8010002743 IMPELLER KIT ø150
New Impeller + *Drive Unit	WP50 Impeller + *Drive Unit WP50	8010001710 SERVICE KIT MALE ULTRAPURE LeviMag® SIZE WP50 M6	The recommended maximum speeds in a fully baffled tank - mixing products with water like viscosity - are:im 4" impeller: 350 RPM 6" impeller: 250 RPM	Buy Impeller Kit 8010002742 IMPELLER KIT ø100 or 8010002743 IMPELLER KIT ø150 + DU Kit and Gear Motor (Clean Room or Blue)
*New Drive Unit	*Drive Unit WP50		The recommended maximum speeds in a fully baffled tank - mixing products with water like viscosity - are:im 4" impeller: 350 RPM 6" impeller: 250 RPM	DU Kit and Gear Motor (Clean Room or Blue)

* Be sure to check measurement **E** and **G** difference between old Drive Unit and new Drive Unit to ensure the new one will fit your current solution. See underneath shown scheme.

Table 1. MM338-4

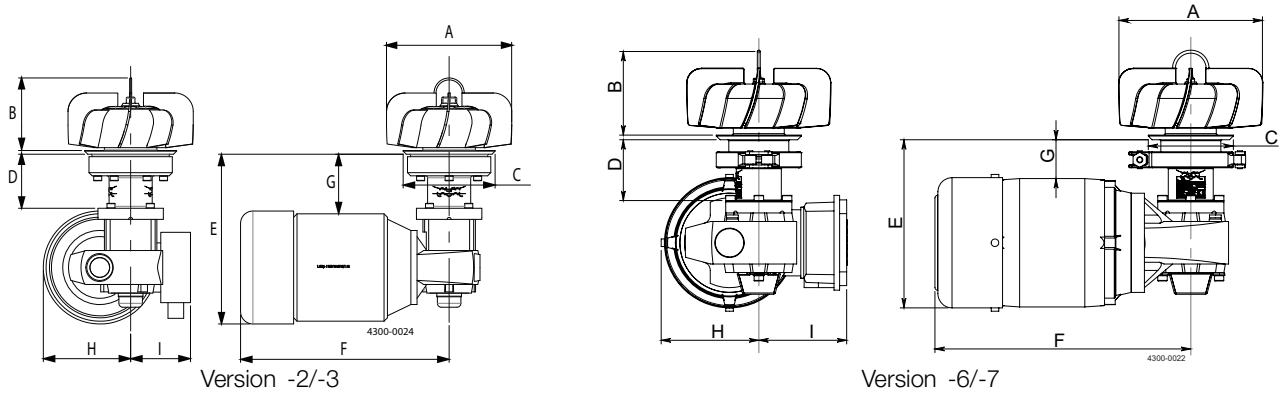
Type	Magnetic Mixer UltraPure, MMU				LeviMag®				LeviMag®	
	-2	-3	-6	-7	S (painted)	E (painted)	S (cl.room)	E (cl.room)	S (PREMIUM)	E (PREMIUM)
Version					WP50	WP50	WP50	WP50	WP50	WP50
Dimension mm / inch	MM338-4	MM338-4	MM338-4	MM338-4	Ø100	Ø100	Ø100	Ø100	Ø100	Ø100
A	Ø102 / 4	Ø102 / 4	Ø102	Ø102	Ø100	Ø100	Ø100	Ø100	Ø100	Ø100
B	89 / 3.5	89 / 3.5	89	89	72	72	72	72	72	72
C	Ø90 / 3.54	Ø90 / 3.54	Ø90	Ø90	Ø89	Ø89	Ø89	Ø89	Ø89	Ø89
D	64 / 2.5	114 / 4.5	64	114	75	125	75	125	75	125
E	254 / 10	304 / 11.97	177	227	215	265	209	259	202	252
F	268 / 10.55	268 / 10.55	270	270	340	340	308	308	318	318
G	62.5 / 2.45	112.5 / 4.42	41	91	50	100	57	107	63	113
H	103.5 / 4.07	103.5 / 4.07	103,5	103,5	114	114	108	108	105	105
I	93 / 3.66	93 / 3.66	93	93	111	111	93	93	94	94

Table 2. MM338-6

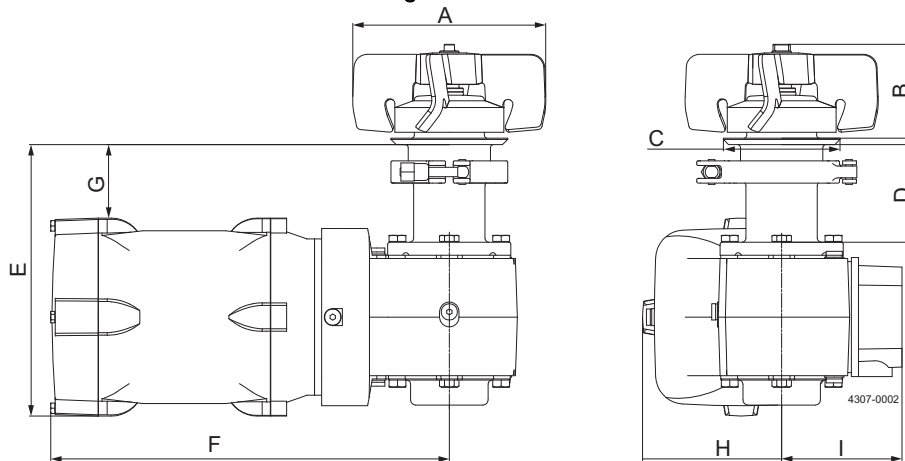
Type	Magnetic Mixer UltraPure, MMU				LeviMag®				LeviMag®	
	-2	-3	-6	-7	S (painted)	E (painted)	S (cl.room)	E (cl.room)	S (PREMIUM)	E (PREMIUM)
Version					WP50	WP50	WP50	WP50	WP50	WP50
Dimension mm / inch	MM338-6	MM338-6	MM338-6	MM338-6	Ø150	Ø150	Ø150	Ø150	Ø150	Ø150
A	Ø155 / 6	Ø155 / 6	Ø155	Ø155	Ø150	Ø150	Ø150	Ø150	Ø150	Ø150
B	89 / 3.5	89 / 3.5	89	89	72	72	72	72	72	72
C	Ø90 / 3.54	Ø90 / 3.54	Ø90	Ø90	Ø89	Ø89	Ø89	Ø89	Ø89	Ø89
D	64 / 2.5	114 / 4.5	64	114	75	125	75	125	75	125
E	254 / 10	304 / 11.97	177	227	215	265	209	259	202	252
F	268 / 10.55	268 / 10.55	270	270	340	340	308	308	318	318
G	62.5 / 2.45	112.5 / 4.42	41	91	50	100	57	107	63	113
H	103.5 / 4.07	103.5 / 4.07	103,5	103,5	114	114	108	108	105	105
I	93 / 3.66	93 / 3.66	93	93	111	111	93	93	94	94

2 Upgrade possibilities of MM338

Magnetic Mixer MM338



LeviMag® version WP50



2.1 Drive Unit Upgrade (DU KIT and Gear Motor)

Table 3. Drive Unit Upgrade (DU kits) - WP50

WP50 Std. DU Kit	WP50 Ext. DU Kit
<i>Item no.</i>	<i>Item no.</i>
8010001747	8010001750

2 Upgrade possibilities of MM338

Table 4. Gear motors

Size	Item no.	Description	Mounting Angle*	Gear Motor, Surface
WP50	9615456701	Nord SK930072.1ABH-80T1/4TF	0-22 deg	IE4, Blue RAL5010
WP50	9615456703	Nord SK930072.1ABH-80T1/4TF	23-45 deg	IE4, Blue RAL5010
WP50	9615456702	Nord SK930072.1ABH-80T1/4HMTTF	0-22 deg	IE4, Clean room
WP50	9615456704	Nord SK930072.1ABH-80T1/4HMTTF	23-45 deg	IE4, Clean room
WP50	9615488501	Nord SK930072.1ABH-71SP/4CUSTF	0-22 deg	PREMIUM, Blue RAL5010
WP50	9615488502	Nord SK930072.1ABH-71SP/4CUSTF	23-45 deg	PREMIUM, Blue RAL5010

*Please see the LeviMag® Instruction Manual for detailed information

How to contact Alfa Laval

Contact details for all countries are continually updated on our website.

Please visit www.alfalaval.com to access the information directly.

© Alfa Laval Corporate AB

This document and its contents is owned by Alfa Laval Corporate AB and protected by laws governing intellectual property and thereto related rights. It is the responsibility of the user of this document to comply with all applicable intellectual property laws. Without limiting any rights related to this document, no part of this document may be copied, reproduced or transmitted in any form or by any means (electronic, mechanical, photocopying, recording, or otherwise), or for any purpose, without the expressed permission of Alfa Laval Corporate AB. Alfa Laval Corporate AB will enforce its rights related to this document to the fullest extent of the law, including the seeking of criminal prosecution.